



# Reconciliation Committee

National Heritage Management Plan for the  
Adelaide Park Lands and City Layout

To seek feedback on draft National Heritage Management Plan for the  
Adelaide Park Lands and City Layout.

# National Heritage Management Plan for the Adelaide Park Lands and City Layout

## Purpose

- **2008** - Adelaide Park Lands and City Layout was inscribed on the National Heritage List
- A National Heritage Management Plan will help to protect the Park Lands for future generations
- Consultation is occurring with key stakeholders including Council, land managers and traditional owners (Kaurna)

# National Heritage Management Plan for the Adelaide Park Lands and City Layout

## Key Questions

### KEY QUESTION

What would you change about the Park Lands and City Squares to better celebrate Kurna culture?

### KEY QUESTION

Are there areas of the Park Lands that could better facilitate access to carry out cultural activities?

### KEY QUESTION

The draft plan identifies opportunities for further interpretation of Kurna values in the Park Lands and City in line with Council's Reconciliation Action Plan (Kurna cultural mapping, Queen Iparrityi statue). Is there anything further you wish to raise?

National Heritage Management Plan for the Adelaide Park Lands and City Layout  
**Consultant Team**

Swanbury Penglase have been engaged to develop the National Heritage Management Plan for the Adelaide Park Lands and City Layout

# Adelaide Park Lands & City Layout National Heritage Management Plan (HMP)

March 2023 ref 22109



**Swanbury  
Penglase**

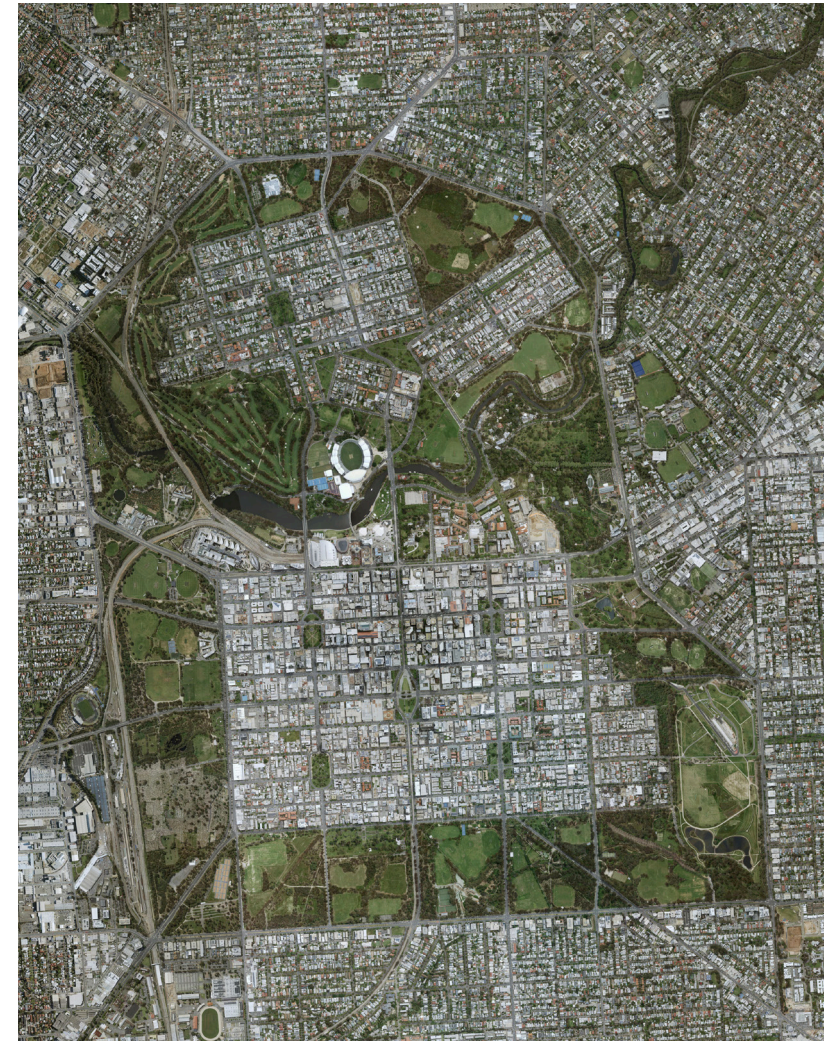
# Introduction

## Project Team

- > **Swanbury Penglase's heritage team:**
  - Andrew Klenke - Director**
  - Dr Susan Lustri - Project Historian**
  - Dr Stephen Schrapel - Project Lead**
- > **Independent Heritage Consultants:**
  - Guadalupe Cincunegui - Review of archaeology provisions**
- > **Dr David Jones - Peer Review**

## Project Objectives

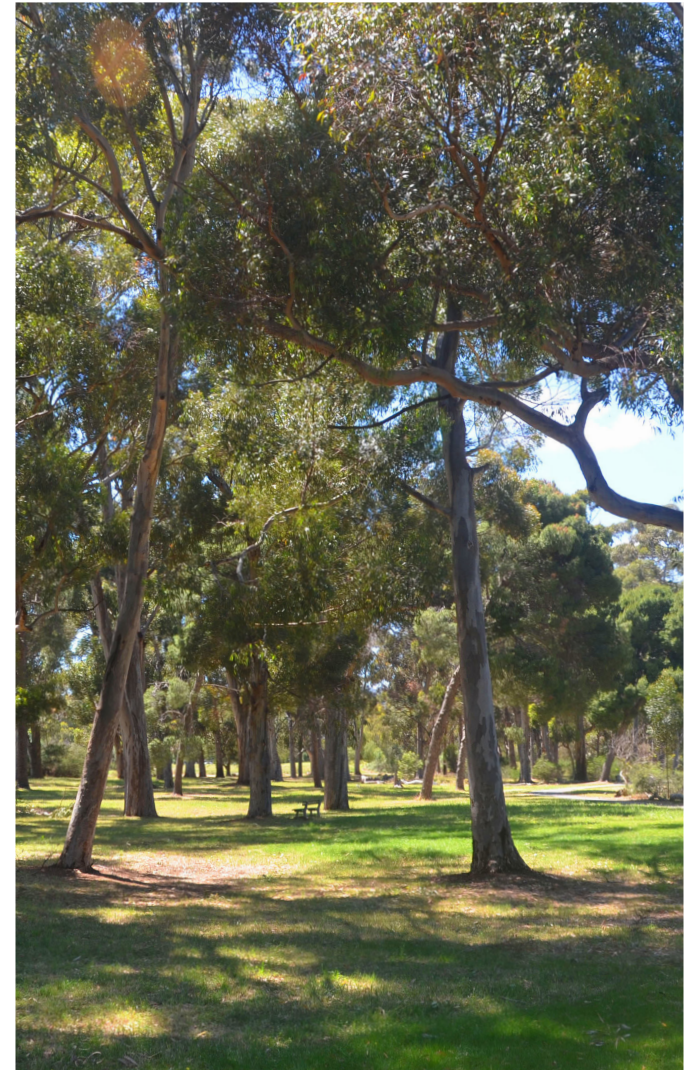
- > **A document which helps owners, managers and authorities understand the national heritage values of Adelaide Park Lands and City Layout.**
- > **Intended to be used as a tool by Council, State and Federal Government agencies to manage change, inform future development, decision making and management strategies for the place.**
- > **Meet the requirements of the funding agreement with the Australian Government through the Protecting National Historic Sites Program.**



# Introduction

## Workshop Purpose

- > **Provide background on the HMP project and its goals**
- > **Update the Reconciliation Committee on the development of conservation policy relevant to Aboriginal cultural heritage in the Park Lands and City Layout.**
- > **Answer questions and receive feedback on the draft plan, specifically the proposed conservation policies and actions related to Aboriginal cultural heritage**



# Project Background

## Why is a Heritage Management Plan Required?

- > **Adelaide Park Lands and City Layout was entered on the National Heritage List in 2008 as a “a masterwork of urban design and signifies a turning point in the settlement of Australia...[and it is] the most extensive and substantially intact nineteenth-century park lands in Australia.”**
- > **A HMP is a non-statutory requirement for a place not owned by the Commonwealth, “but the Commonwealth Government must use its best endeavours to ensure that a plan for managing a place included in the national Heritage List is prepared and implemented, in co-operation with the state or territory jurisdiction where the place is located.”**





# Project Background

## What is a Heritage Management Plan?

### A Heritage Management Plan:

- > Provides a better understanding of the how the national heritage values are represented.
- > Describes the place in detail
- > Provides an assessment of condition and integrity
- > Identifies constraints and opportunities
- > Develops management policies and strategies for implementation
- > Guided by the principles contained in Schedule 5A of the Environment Protection and Biodiversity Conservation Regulations, (Aus) 2000: 'Management Plans for Commonwealth Heritage Places'
- > Endorsed under the EPBC Act by the Minister for the Environment.



# Conservation Policy

The HMP contains policy and actions relating to the conservation of:

## Form

- > The overall plan including layout of North and South Adelaide set within encircling Park Lands (often referred to as figure-of-eight form), incorporating gridded street pattern (including hierarchy of roads), six town squares and separated by Karrowirra Parri/River Torrens.
- > Natural Topography
- > Alienation of Land
- > Views & Vistas
- > Shape of City Squares

## Fabric & Setting

- > A layered and diverse cultural landscape which reflects the heritage values of: Aboriginal use and cultural significance; European settlement; Light's diagrammatic plan; and the subsequent phases evolution of the city and landscape, including the influence of later designers and revegetation efforts
- > State and local heritage places
- > Significant landscape elements, vegetation, archaeology
- > Proportion of building to Park Land
- > Intrusive elements

## Aboriginal cultural heritage

- > Celebrate Aboriginal cultural heritage
- > Conserve and manage significant objects and sites
- > Allow access to carry out traditional cultural practices

## Use

- > Free and accessible Park Lands and Squares for a variety of uses
- > Contrasting spaces (informal/formal)
- > Provide facilities
- > Tourism
- > Allow change where it does not impact on the values

## Interpretation

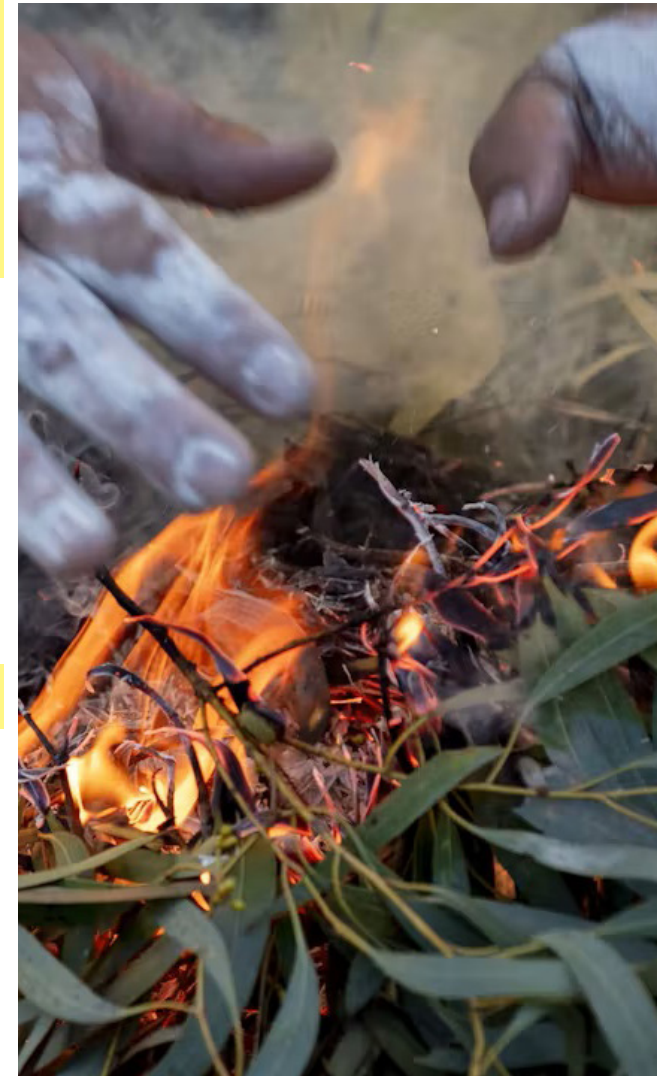
### Management and Governance

- > Comply with legislation
- > Training
- > Awareness

### Monitoring the condition of values

### Review

- > 5 yearly review



# Conservation Policy

## Aboriginal Cultural Heritage

### **4.1 In partnership with the City of Adelaide's Reconciliation Committee, develop strategies to appropriately record, respect, and celebrate Aboriginal heritage within the Park Lands and City Layout.**

4.1.1 Implement the actions identified in the City of Adelaide's Reconciliation Action Plan 2021-2024, specifically:

- Develop a Kurna cultural map
- Identify opportunities for Kurna street names in the CBD and North Adelaide.
- Develop an opportunity to create a statue of Queen Iparrityi in the CBD.
- Develop employment opportunities for Kurna people to assist with the management and maintenance of the Park Lands.
- Support and incentivise opportunities for Kurna run enterprises.
- Educating the CoA employees, the Adelaide community and visitors on the use and importance of the area to the Kurna people

### **4.2 Conserve and manage Aboriginal sites and objects in the Park Lands area.**

4.2.1 Ensure that prior to the preparation of development proposals, the potential for sub-surface deposits of Aboriginal cultural material is subject to archaeological assessment in consultation with the Kurna people.

4.2.2 Ensure that works and maintenance service contracts include notice of the potential for unforeseen discovery of Aboriginal cultural heritage, including human remains, and the relevant statutory obligations and notification procedures if a discovery occurs

### **4.3 Ensure that the publicly accessible areas of the Park Lands continue to be available for use by the traditional owners, the Kurna people, to maintain their cultural traditions.**

4.3.1 Continue to support the restoration of Kurna cultural traditions to the Park Lands through the Reconciliation process, in partnership with the Kurna people.



# Conservation Policy

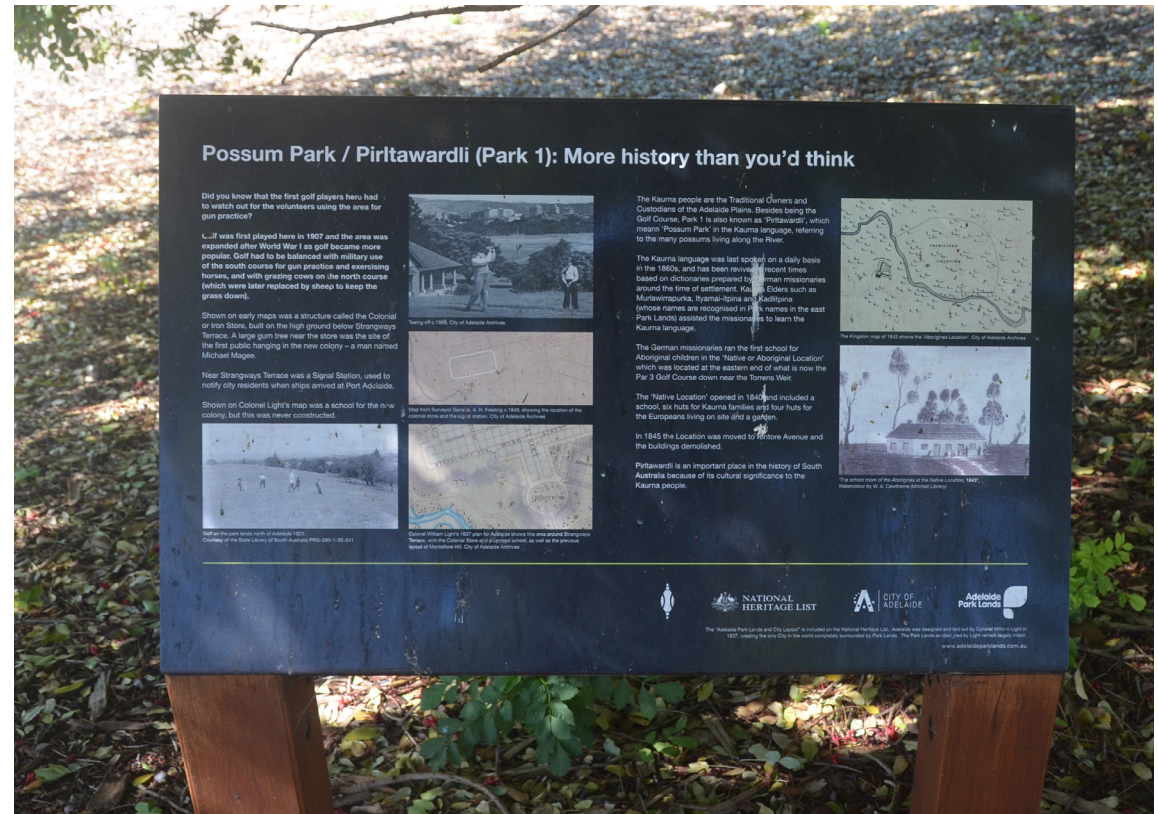
## Interpretation

**6.2 Celebrate and support Aboriginal cultural heritage interpretation in the Park Lands and City Layout in partnership with the Kaurna people. This should co-exist with interpretation opportunities for European cultural heritage values..**

6.2.1 Maintain and promote the Kaurna place naming of Parks and Squares.

6.2.2 In partnership with the Kaurna community, develop an Aboriginal interpretation plan for the area.

6.2.3 Involve Kaurna people in the design and approval of content of any signage proposals.



# National Heritage Management Plan for the Adelaide Park Lands and City Layout

## Key Questions

### KEY QUESTION

What would you change about the Park Lands and City Squares to better celebrate Kurna culture?

### KEY QUESTION

Are there areas of the Park Lands that could better facilitate access to carry out cultural activities?

### KEY QUESTION

The draft plan identifies opportunities for further interpretation of Kurna values in the Park Lands and City in line with Council's Reconciliation Action Plan (Kurna cultural mapping, Queen Iparrityi statue). Is there anything further you wish to raise?

- **February to March 2023** – Complete targeted stakeholder consultation including KYAC and Kaurana community
- **March to May 2023** - Consultant to finalise the National Heritage Management Plan
- **June 2023** - Council endorsement of final National Heritage Management Plan
- **30 June 2023** - Submission of National Heritage Management Plan